



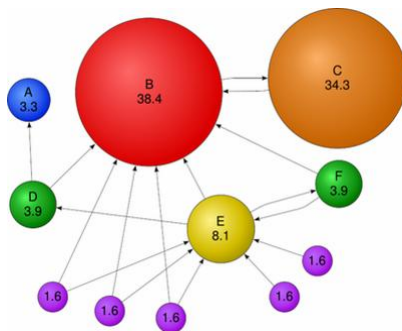
MetaFlows' Security-as-a-Service

July 3, 2015

The Software-as-a-Service (SaaS) model is revolutionizing the software industry because it reduces complexity and cuts costs while increasing productivity and online collaboration. The MetaFlows Security System (MSS) is the first and only product built from the ground-up that uses the SaaS model to simplify and streamline network security monitoring and compliance applications. The MSS's **Security-as-a-Service** product is a quantum leap in several ways:

- **Shared Network Intelligence.** The MSS uses *five* different network intelligence sources at once. You will be better protected from threats because no *single* intelligence source is enough.
- **Comprehensive Logging.** The MSS can collect and correlate events from all of your security devices and store them in the MetaFlows Cloud. This enables you to easily meet computer security auditing standards.
- **Confidentiality.** Application data (payload) is never stored outside your network. The security event messages are stored in the MetaFlows Cloud using a highly secure cloud infrastructure (Amazon EC2) that makes these records as secure as your bank account records.
- **Reduced IT Costs.** The MSS can run on off-the-shelf hardware, VMware virtual appliances or EC2 Amazon instances. All software and intelligence updates are automatically and seamlessly applied without user intervention. All updates are available on the next browser refresh.

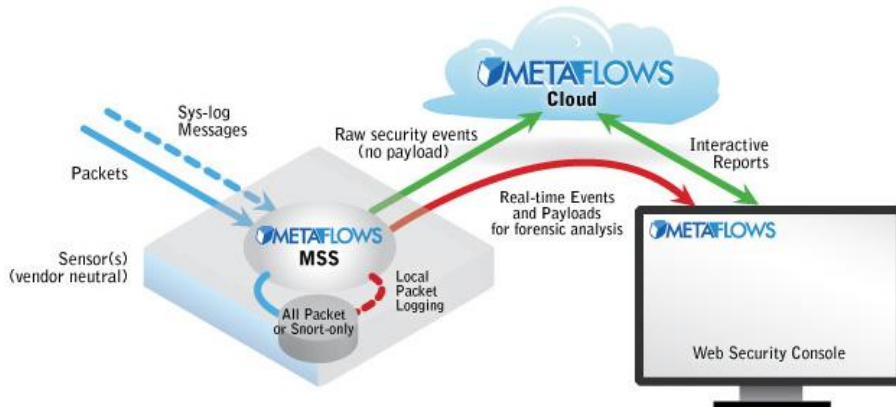
Predictive Global Correlation



The core of the MSS resides in the MetaFlows Cloud. Security event data from MetaFlows customers' sensors is automatically sent to the cloud. There it is compared and correlated using a system mathematically similar to Google's page ranking algorithm. The resulting intelligence data can then be pushed out back to the individual sensors to rank security events that have significant global relevance. The outcome of the algorithm is that once a piece of intelligence reaches our system it is not equally distributed to all customers. Instead, it is mathematically weighted and routed to where it is most relevant, just as the first few web pages of a Google search yield the most relevant information for a particular search. This process gives MetaFlows' customer actionable intelligence unavailable anywhere else in the world.

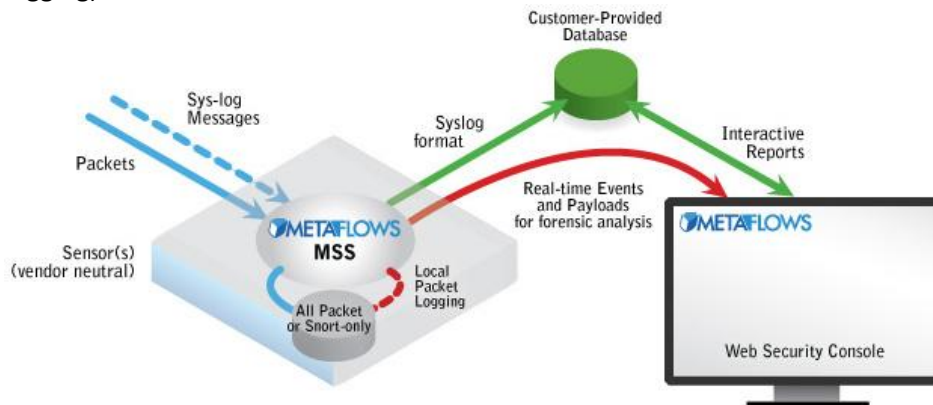
Public-cloud Confidentiality

In the default configuration, the MetaFlows Security System exports security event messages to the MetaFlows Cloud and stores packet logs on the local sensor's disk. In our system, this separation is very strict; the MetaFlows Cloud will **always only** contain security event messages and the local disk will **always only** contain packet logs. This division makes cloud-based security event monitoring much more practical.



The very sensitive payload data contained in the packet logs is protected by the customer's own network security infrastructure inside the sensor (usually placed behind a firewall). The security event messages are stored in the MetaFlows Cloud using a highly secure cloud infrastructure (Amazon EC2) that makes these records as secure as your bank account records.

The advantage of this architecture is that security event data can be correlated in the MetaFlows Cloud with five distinct network intelligence sources to give you much better security without jeopardizing data confidentiality in any way. As shown in the figure above, the ranked security events are made available through a web security console either as historical, interactive reports, email alerts or real time event flows. The payloads never leave the sensor's hard disk unless a properly authenticated user queries the sensor for particular payload data to be included in an escalation report. Optionally, the local packet logging can also be restricted to log only the packets that cause security events (Snort logging).

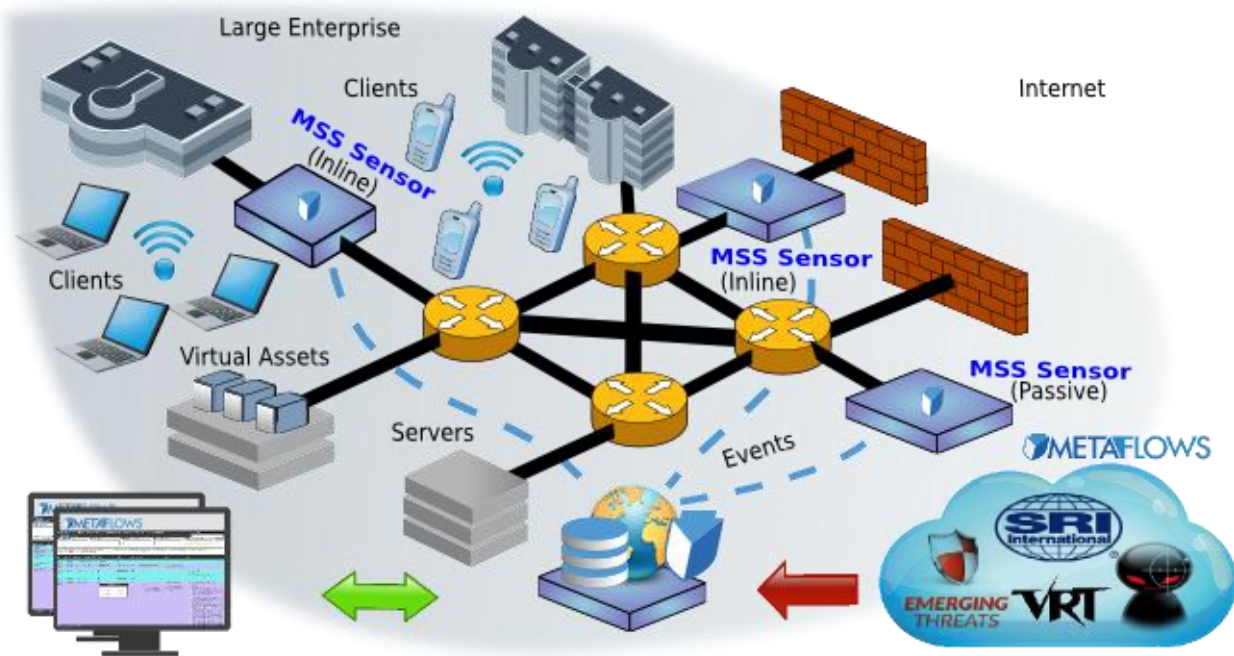


The MSS can also be modified not to export security events to the MetaFlows cloud. In this configuration, depicted in the figure above, the security events are instead sent out in standard syslog

format and are consumed by a customer-provided database. As in the default configuration, the payloads are still stored locally and are available to a properly authenticated user through the web security console.

Global Enterprise Solution

The MSS Global Enterprise (MSS GE) is a complete turnkey security system intended for large enterprise or government networks, and includes advanced Malware/Botnet detection, Intrusion Prevention, Log Management/SIEM, and integrated vulnerability assessment. The MSS GE controller can be deployed either as a high performance appliance (starting at 1200 events/second) or as an Amazon EC2 instance (AMI). The MSS GE sensors can be easily provisioned on off-the-shelf hardware (up to 10 Gbps per sensor) running Linux CentOS/Red Hat, high-performance appliances, VMware, or on Amazon EC2.



Web Security Console

- Real Time SIEM, Flow & Log Management
- Multi-user Online Collaboration
- One-click Remediation
- Highly Customizable

MSS GE Controller

- Deploy as an Appliance or as an Amazon EC2 Instance
- Predictive Event Correlation Quickly
- Finds Malware
- Centralized Sensor Provisioning

Daily Intelligence Feeds

- Behavioral Malware Detection
- Zero-day/APT Intelligence
- Vulnerability Scanning
- Geo-location Intelligence



MetaFlows, Inc.
715 J ST STE 205
San Diego, CA 92101

Voice: 1 (877) 664-7774
Fax: 1 (877) 539-7778
www.MetaFlows.com

Reduced IT Costs Using Open Standards

The Security-as-a-service model reduces IT expenditures by supporting off-the-shelf hardware, VMware, and/or Amazon EC2 instances.

Off-the-shelf Hardware Appliances

	1U 1G	1U 10G	2U 10G
RAM	16 GB	64 GB	128 GB
Hard Drive	1 TB	4 x 1TB	4 x 1TB
Processor	Intel 1240V3	2 x Intel Xeon	4 x AMD 6276
Ports	3x1G	2x1G + 2x10G	2x1G + 2x10G
Throughput	800 Mbps	5 Gbps	>5 Gbps

The Next Step

MetaFlows' technology offers compelling advantages over other network security products. We strongly encourage you to test it on your network, possibly comparing it directly to other enterprise security products, or just find out what cyber threats it can detect in your own network.

MetaFlows offers a free 14-day trial so you can access all that our software has to offer. You will be included in all the latest security updates and receive support to assist you in effectively employing our service. From that point, subscribing is easy and there are a variety of service levels available to fit your budget. Once you have purchased our product, you will continue to receive support in the form of training, webinars, phone, and email.

If you have any questions about what MetaFlows can do for you and the software and network security of your enterprise, please contact us through our website at MetaFlows.com or by phone at (877) 664-7774. Upon contact, a live product demonstration including a question and answer session with one of our engineers can be arranged at your convenience.